



ERP40-55VM



Key features

Primary Task: **Lifting and Stacking**

Environment: **Indoor, Outdoor**

Load Weight: **4000-5500 kg**

Max Lift Height: **3090-6000 mm**

Power Source: **Electric**

4 Wheel Electric Forklift Truck

An 80 volt energy efficient fork lift truck series that delivers the highest levels of productivity in heavy duty internal or external applications

The VM series of electric counterbalanced forklift trucks delivers equivalent ICE performance which can be matched to suit the application while 'e-Balance' can provide the best of both worlds when required.

With a high residual capacity the VM electric fork lift truck series is the ultimate lift truck for heavy duty and attachment applications in applications up to 5,500kg:

- Timber, Paper and Pulp
- Brewing, Bottling and Distilling
- Metal Fabrication
- Automotive

Ergonomic features that provide operator comfort and operational efficiency

- Designed to provide the most comfortable working environment for operators the VM series operator compartment has the lowest WBV (whole body vibration) in its class in the industry contributing to a reduction in back strain and fatigue of your operators
- An Infinitely adjustable steering column with memory-tilt option and low step height provides easy on and off access
- The fully adjustable full suspension low vibration seat helps reduce the transmission of truck vibration to the operator and provides a smooth ride
- The 'heads up' display keeps operators field of vision clear and provides 'at a glance' information on truck operating conditions and performance settings
- An adjustable mini-lever module armrest with built-in hydraulic controls, directional switch, emergency disconnect button and warning horn

button ensures operators stay in control

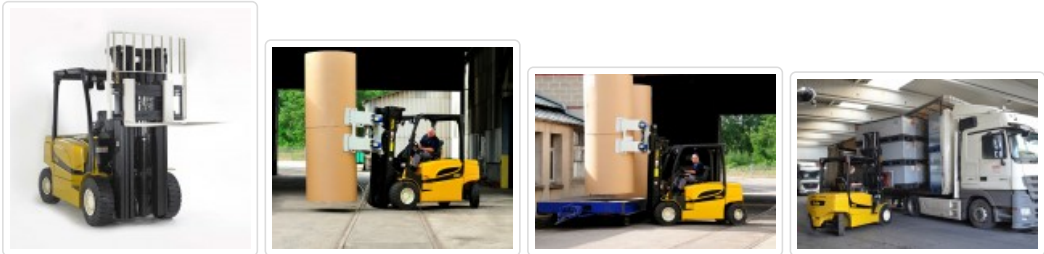
Performance features that deliver efficient handling and high levels of productivity

- Increased articulation from the Yale Extended Steer Axle with CSE (Continuous Stability Enhancement) allows the VM series to manoeuvre in tighter working aisles and operate comfortably over poor ground conditions
- Four performance modes can be accessed through the 'heads up' display allowing a business precise application or operator setting to be selected. Additional settings can be set by a Yale service technician
- The HiP (High Performance) setting delivers a competitive performance of 20.0km/h (laden) while the eLo (Energy Low) setting delivers low energy consumption
- The e-Balance of performance, manoeuvrability and battery shift life can all be matched to the application needs increasing productivity and throughput, significantly reducing the cost per pallet moved
- The YaleStop™ feature is automatically set by the control system so the park brake is always set whenever the truck is stationary and traction has not been requested this provides operators with confidence when lifting and loading or working on gradients

Model	Load Capacity (kg)	Lift Height (mm)	Battery Capacity (V / Ah)	radius	centre
ERP40VM	4000	6000	80V / 840-930Ah	2411	500
ERP45VM	4500	5735	80V / 840-930Ah	2411	500
ERP50VM	5000	5735	80V / 840-930Ah	2411	500

ERP40-55VM - Specification Sheet

Yale® czołowe wózki widłowe oraz urządzenia magazynowe - Pełna oferta produktowa



Oddział Szczecin

ul. Szczawiowa 53d
70-010 Szczecin
tel. 91 489 33 93
fax 91 482 82 18
szczecin@yale.emtor.pl

Oddział Słupsk

ul. Poznańska 83
76-200 Słupsk
tel. 59 841 10 64
fax 59 841 10 64
slupsk@yale.emtor.pl

Oddział Gdańsk

ul. Glazurowa 7
Kowale, 80-180 Gdańsk
tel. 58 301 89 46
fax 58 301 89 46
gdansk@yale.emtor.pl

Oddział Poznań

ul. Pilotów 19
Janikowo, 62-006 Kobylnica
tel. 61 653 31 57
fax 61 653 31 58
poznan@yale.emtor.pl

Oddział Warszawa

ul. Serwituty 25
02-233 Warszawa
tel. 22 343 94 85
fax 22 343 94 86
warszawa@yale.emtor.pl

Oddział Wrocław

ul. Rakowa 28
51-421 Wrocław
tel. 71 325 28 06
fax 71 325 28 20
wroclaw@yale.emtor.pl

Oddział Kraków

ul. Cechowa 51
30-614 Kraków
tel. 12 659 57 40
fax 12 659 57 40
krakow@yale.emtor.pl

Emtor Sp. z o.o. ■ ul. Włocławska 147-157 ■ 87-100 Toruń ■ tel. 56 654 89 35 ■ fax 56 654 89 36 ■ biuro@yale.emtor.pl ■ www.yale.emtor.pl ■ NIP: 956-213-74-53 ■ Nr KRS: 0000122446
Sąd Rejonowy w Toruniu VII Wydział Gospodarczy KRS ■ Wartość kapitału zakładowego 3.000.000 zł



wyłączny przedstawiciel marki

