



ERC22-35VG



Key features

Primary Task: **Lifting and Stacking**

Environment: **Indoor**

Load Weight: **2200-3500 kg**

Max Lift Height: **3310-6000 mm**

Power Source: **Electric**

4 Wheel Electric Forklift Truck Cushion Tyre

A compact, high performance electric fork lift truck designed specifically for arduous internal applications

This 80 volt, 4 wheel, cushion tyre series electric counterbalanced forklift truck is powerful, highly manoeuvrable and extremely stable in high stacking applications. With a choice of short, medium and long wheelbase models the VG series has a model to suit almost every internal application and shift pattern requirement.

The trucks compact dimensions, high visibility masts and tight turning circles result in higher operator productivity especially in aisles, congested loading bays or typical assembly line-feed applications:

- Print, Paper and Packaging
- Food and Beverage Production
- Manufacturing
- Transport and Distribution

Ergonomic features that provide operator comfort and operational efficiency

- Generous foot space and a low intermediate step height provide a comfortable working space with easy on and off access
- A fully adjustable full suspension low vibration seat (0.3-0.5m/s²) helps reduce the transmission of truck and floor condition vibration to the operator
- The 'heads up' display helps keep the operators field of vision clear and provides 'at a glance' information on truck operating conditions and performance settings
- An adjustable mini-lever module armrest with built-in hydraulic controls, directional switch, emergency disconnect button and warning horn

button

- The auto deceleration system (ADS) reduces operator fatigue

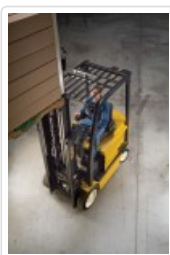
Performance features that deliver efficient handling and high levels of productivity

- A vehicle system manager (VSM) allows adjustment of truck parameters as well as monitoring key truck functions to provide operator and application matched performance
- The HiP (High Performance) setting delivers performance on the 2200kg model up to 19.8km/h (laden) while the eLo (Energy Low) setting delivers a low energy consumption of 6.31kW/h on the VDI 2198 test cycle
- The high seating position for operators provides a clear view of the fork tips for fast and efficient load spotting
- The continuous stability enhancement system (CSE) optimises steer axle geometry to reduce truck lean when cornering leads to confident load handling and faster throughput times
- The e-Balance of performance, manoeuvrability and battery shift life which can all be matched to the application needs increase productivity and throughput, significantly reducing the cost per pallet moved
- A 'Return to set' tilt function is available as an option to further increase productivity and accuracy in load spotting

| Model | Load Capacity (kg) | Lift Height (mm) | Battery Capacity (V / Ah) | radius | centre |
|---------------|--------------------|------------------|---------------------------|--------|--------|
| ERC22VG (SWB) | 2200 | 6000 | 80V / 375Ah | 1735 | 500 |
| ERC25VG (MWB) | 2500 | 6000 | 80V / 450Ah | 1884 | 500 |
| ERC30VG (MWB) | 3000 | 5968 | 80V / 450Ah | 1915 | 500 |
| ERC32VG (LWB) | 3200 | 5968 | 80V / 600Ah | 2074 | 500 |
| ERC35VG (LWB) | 3500 | 5968 | 80V / 600Ah | 2094 | 500 |

ERC22-35VG - Specification Sheet

Yale® czółowe wózki widłowe oraz urządzenia magazynowe - Pełna oferta produktowa



Oddział Szczecin

ul. Szczawiowa 53d
70-010 Szczecin
tel. 91 489 33 93
fax 91 482 82 18
szczecin@yale.emtor.pl

Oddział Słupsk

ul. Poznańska 83
76-200 Słupsk
tel. 59 841 10 64
fax 59 841 10 64
slupsk@yale.emtor.pl

Oddział Gdańsk

ul. Glazurowa 7
Kowale, 80-180 Gdańsk
tel. 58 301 89 46
fax 58 301 89 46
gdansk@yale.emtor.pl

Oddział Poznań

ul. Pilotów 19
Janikowo, 62-006 Kobylnica
tel. 61 653 31 57
fax 61 653 31 58
poznan@yale.emtor.pl

Oddział Warszawa

ul. Serwituty 25
02-233 Warszawa
tel. 22 343 94 85
fax 22 343 94 86
warszawa@yale.emtor.pl

Oddział Wrocław

ul. Rakowa 28
51-421 Wrocław
tel. 71 325 28 06
fax 71 325 28 20
wroclaw@yale.emtor.pl

Oddział Kraków

ul. Cechowa 51
30-614 Kraków
tel. 12 659 57 40
fax 12 659 57 40
krakow@yale.emtor.pl

Emtor Sp. z o.o. ■ ul. Włocławska 147-157 ■ 87-100 Toruń ■ tel. 56 654 89 35 ■ fax 56 654 89 36 ■ biuro@yale.emtor.pl ■ www.yale.emtor.pl ■ NIP: 956-213-74-53 ■ Nr KRS: 0000122446
Sąd Rejonowy w Toruniu VII Wydział Gospodarczy KRS ■ Wartość kapitału zakładowego 3.000.000 zł



wyłączny przedstawiciel marki

